

## Early intervention takes place:

- within the home environment
- within the child day care
- within the rooms of the information centre

## In collaboration with:

- Paediatricians/doctors
- Therapists
- Child day care
- Hospitals
- Social Services
- Schools

*The staff members are subject to confidentiality.*

*All offers are for free for parents.*

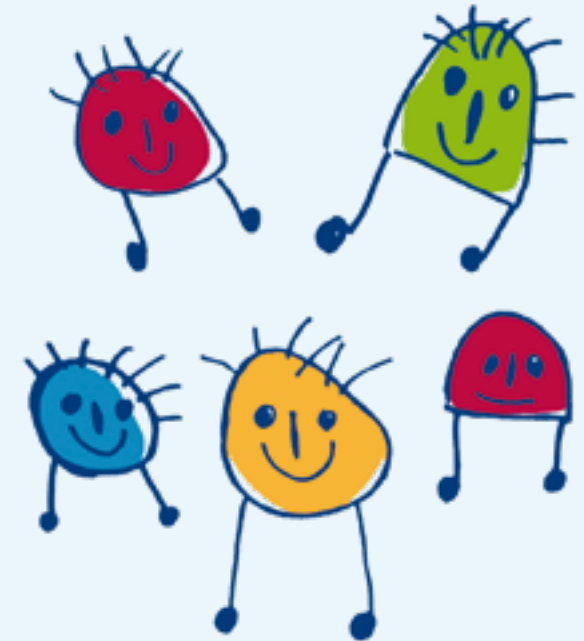


## Early Intervention and Information Centre for early childhood development

### Early Intervention and Information Centre

Theodor-Heuss-Straße 9  
36304 Alsfeld  
Tel.: 06631 4732  
Fax: 06631 8013-31  
E-Mail: ff-bs@kompassleben.de

Königsberger Straße 8  
36341 Lauterbach  
Tel.: 06641 5523  
Fax: 06641 64596-60  
E-Mail: ff-bs@kompassleben.de



### Responsible Body:

Kompass Leben e.V.  
Pestalozzistraße 1  
36358 Herbstein  
www.kompassleben.de  
Tel.: 06643 91853-0  
Fax: 06643 7246

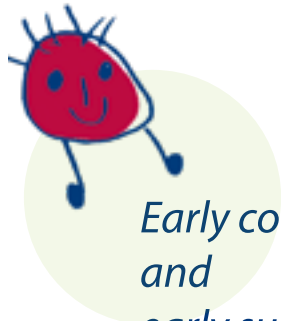


## *The early intervention and information centre for early childhood development...*

advises and supports families with children being in infancy, early childhood and preschool age.

Parents and guardians that worry about the development of their child or wonder whether their child develops according to age can contact the staff members of the early intervention and information centre.

The earlier abnormalities or impairments in child development the better it is to prevent and help, to reduce fears and to overcome helplessness.



*Early consultation and early support are better than waiting!*

*...is the right contact if you are worried about the development of your child...*



this means if your child:

- is a risk child (e.g. premature birth, long illness or hospital stay,...)
- develops hesitantly
- has a physical or mental impairment
- does not reach, sit, crawl, walk or speak
- has difficulties to eat or drink
- is not able to hear or see well
- is not able to play
- is too quiet or too restless
- has difficulties dealing with other children
- ...

*...and offers family oriented advises and holistic development support...*

this means:

### *Advice*

- regarding the child's development
- including the whole family
- regarding parenting
- regarding the integration into child care and school

### *Support/Special needs*

- by playing together
- in single contact and small groups

### *Additional offers:*

- Parent-child-groups
- Parents' evenings
- Psychomotoric groups
- Therapeutic riding
- Mobility bath
- Forest group